



World Food  
Program USA

# IMPACT REPORT

MAY - SEPTEMBER 2024



## **Deep humanitarian challenges remain in 2024. This year, 309 million people are facing acute hunger.**

The places of highest concern include Gaza, Haiti, Mali and Sudan. Hunger crises are driven by factors including conflict, economic challenges and the effects of the climate crisis. Families are unable to feed their loved ones due to these dire circumstances.

Armed conflicts have increased sharply over the last decade. Today, nearly 70% of people facing acute hunger live in fragile or conflict-affected countries. In Gaza and Sudan, ongoing violence has worsened food security. Millions of people have been displaced from their homes and have limited access to sufficient food, shelter and water.

## **Our Fall 2024 Impact Report highlights the critical work of the United Nations World Food Programme (WFP) and the difference your support makes.**

From delivering emergency food assistance in crisis settings to investing in economic opportunities and school meals programs, WFP is leading humanitarian efforts that save lives and change futures. This is made possible through your generous partnership.

**Dedicated partners make a difference in restoring people's access to food. Your support matters.**

*Cover: In Somalia, Safiyo and her family transitioned from a nomadic lifestyle to working on a WFP-supported livelihoods site. Now, they use drip irrigation and solar-powered water pumps to grow fruits and vegetables. Photo: WFP/Arete/Utaama Mahamud*

*Above: Om-Kelsum Osmel feeds her children a nutritious meal in a refugee camp in the Benishangul-Gumuz region of Ethiopia. Photo: WFP/Michael Tewelde*

## GAZA

This October marks one year since the start of the conflict in Gaza. More than 90% of Gaza's population has been displaced. Thousands of people have been killed or injured. People are sheltering with limited access to food and clean water.

**Nearly the entire population of Gaza, 2.15 million people, are facing crisis levels of hunger or worse, including nearly 500,000 people facing catastrophic levels of hunger.**

A high risk of famine persists across the whole Gaza Strip, as long as the conflict continues, and humanitarian access is restricted. The escalation of violence and spillover effects could push at least 600,000 people in the West Bank into hunger.

An increase in evacuation orders has resulted in large displacements. In August alone, the Israeli authorities issued 16 evacuation orders. Each time Palestinians in Gaza are ordered to evacuate, humanitarian distribution points and hot meals operations must shut down, leaving people with barely any sources of assistance.

WFP staff are increasingly at risk and coming under fire. On August 28, WFP was forced to temporarily suspend its staff movements across Gaza after a WFP team was shot, as their clearly marked vehicle was moving toward an Israeli checkpoint with necessary clearances. Operations have not been halted but have been hampered significantly.

**We call on all parties to respect international humanitarian law, ensure the protection of humanitarian workers, and uphold their commitment to facilitating the delivery of vital and life-saving aid.**

Alongside today's urgent needs, we must think about what is to come. Winter conditions are expected to begin in about two months and make already damaged roads in Gaza unusable. These roads urgently need repairs so WFP can bring food to people who need it to survive. That is why WFP is sounding the alarm on the state of war-affected roads used to transport food assistance around Gaza and storage capacities to be uplifted. Additionally, WFP is deeply concerned about developments in the West Bank, where large-scale Israeli military operations have left the West Bank in a dangerous setting.

WFP continues to provide food assistance to more than 1 million people per month in Gaza despite immense challenges. In the north, WFP-supported kitchens are providing hot meals with fresh vegetables, potatoes and onions. This is part of WFP's efforts to bring nutritious, fresh produce to Gaza to supplement emergency food rations families lived on for months to stave off malnutrition.



IN AUGUST, WFP  
DISTRIBUTED  
**OVER 6.7M**  
**HOT MEALS**  
**THROUGH 60**  
**KITCHENS.**

*Caption: WFP supports a hot meal kitchen in Khan Younis, where people line up to receive what could be their only meal of the day.  
Photo: WFP/Ali Jadallah*



WFP  
من إيد  
بلادك  
مشروع توزيع الوجبات الساخنة  
العائلات في قطاع غزة  
برنامج الأغذية  
العالمي



## SUDAN

War has affected the people of Sudan for over 500 days. As a result, half of Sudan's population, 25.6 million people, are experiencing acute hunger. The first instance of famine since 2017 has been confirmed in Zamzam camp, where hundreds of thousands of people currently live, in Sudan's North Darfur Region.

The conflict has also caused the world's worst displacement crisis: Nearly 11 million people have fled their homes, including 2.3 million people who have crossed to South Sudan, Chad, Egypt, Ethiopia, Libya and the Central African Republic. This displacement applies pressure on already scarce resources, putting the region at risk of destabilization.

Access issues are a challenge, as the volatility of the conflict and recent flooding make it difficult for WFP to safely deliver assistance. Despite these issues, WFP is scaling up food and cash assistance to 14 areas in famine or at risk of famine. The recent reopening of Chad's Adre border with Sudan has allowed humanitarian convoys and WFP trucks to cross into the Darfur region. Nearly 105,000 people will receive this food assistance.



SINCE THE START OF THE CONFLICT, **8.4M PEOPLE** inside Sudan have received lifesaving food and nutrition assistance from WFP.

*Caption: WFP supports a health center in Port Sudan, where mothers and their children are screened and treated for malnutrition.*

*Photo: WFP/Abubakar Garelnabei*



## UKRAINE

WFP is the largest cash provider in the humanitarian community. Whether through food vouchers or debit cards, cash allows individuals to meet their pressing needs by purchasing food, paying for education or addressing health-related expenses. This flexibility respects their dignity and promotes autonomy in decision-making. Cash assistance can also bring long-term benefits by helping people enter the formal economy and access bank accounts. In Ukraine, WFP provides cash assistance to people affected by the war. This form of assistance helps people meet their basic needs while supporting Ukraine's economic recovery.

Since March 2022, WFP has provided more than \$550 million dollars in cash support to people inside Ukraine.

Persons with disabilities are more likely to experience poverty, hunger and malnutrition. With the Ministry of Social Policy, WFP provides them with cash assistance to support their food security over time. Galyna (featured above), a postal worker in Volovets, Ukraine, distributes WFP cash assistance to persons with disabilities. She has also received cash from WFP, which helped cover her medical and transportation expenses to care for her son who has a disability.



WFP REACHED  
**2.4M UKRAINIANS**  
every month  
with food, cash,  
school meals and  
livelihoods support.

*Photo: WFP/Yurko Dyachyshyn*

## DEMOCRATIC REPUBLIC OF THE CONGO

Women play an important role in sustaining their families during crises. They are often the first to skip meals and are more likely to live in poverty and face gender-based discrimination. They are also less likely to receive resources like education, property rights and healthcare.



In the Democratic Republic of the Congo (DRC), armed conflict has pushed people, especially women and girls, into hunger and poverty. To protect their access to food and livelihoods, WFP provides women with economic opportunities and access to training. Ultimately, these skills can propel financial autonomy.

For Matata, tailoring classes give her a sense of freedom and allow her to care for her family.

“The thoughts and worries disappear when I sit to work a sewing machine, that **gives me internal strength and hope.**”



MATATA

Photo: WFP/Benjamin Anguandia

## VENEZUELA

Along the Orinoco River in Venezuela, thousands of people are disconnected from markets and lack access to transportation and health and education services. Many children do not attend school.



WFP and its partners manage a complex logistical process to navigate the river day and night to ensure families receive their food on time.

Photo: WFP/Matias Delacroix

WFP distributes food to more than 30,000 students in 100 schools along the river.





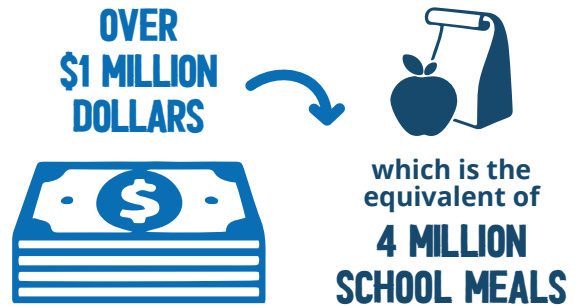
# WORLD FOOD PROGRAM USA LAUNCHED SECOND ERASE HUNGER™ CAMPAIGN

At the start of back-to-school season, World Food Program USA launched its second Erase Hunger™ campaign. The initiative aims to send school meals to children around the world and raise awareness about the critical importance of investing in school meals, which play a vital role in supporting students and their communities.

Amid a global food crisis, over 153 million children are facing extreme levels of hunger. School meals provide essential calories and nutrition that students need to learn, grow and thrive.

In 2023 alone, WFP provided nearly 22 million students with school meals, snacks and take-home vouchers.

**With dedicated commitment from donors and partners, the campaign has raised:**



“At WFP, school meals are more than just food; **they are a lifeline.**”

They transform communities, improve education and strengthen global food systems. The Erase Hunger campaign supports WFP’s school meals program, giving kids the nutrition they deserve.”



**LISA BURGESS**  
WORLD FOOD PROGRAM USA'S SENIOR DIRECTOR  
FOR CORPORATE PARTNERSHIPS



# JULIETH

is a student  
in Ecuador.

She is proudly  
holding a mango  
grown by local  
farmers.





## CLIMATE & EXTREME WEATHER

This summer, millions of Americans faced record-breaking high temperatures. The climate crisis is a reality around the world, and extreme weather events are becoming more frequent and intense. In the past decade, 1.7 billion people have been affected by extreme weather and climate-related disasters.

The climate crisis is also a leading driver of hunger. Repeatedly, people's health, food security and the infrastructure they depend on are affected by hurricanes, tropical storms, droughts and floods, among other climate disasters. Each climate shock or stress can devastate communities, with severe consequences for those already experiencing poverty and hunger.

*Caption: Kapone Likando is a small-scale farmer in Chingobe, Zambia. Extensive drought has destroyed nearly all of his crops. WFP is supporting nearly 1.2 million people in drought affected areas with food and cash assistance and providing humanitarian and logistic support to the government. Photo: WFP/Nkole Mwape*

## HURRICANE BERYL

In late June, Hurricane Beryl became the earliest Category 5 storm in recorded history. Countries in the storm's path experienced strong winds and torrential rain, which damaged homes and infrastructure, caused power outages and disrupted transportation. Initial estimates suggested that over 80,000 people were affected.

In the immediate aftermath of Hurricane Beryl, WFP collaborated with the governments of Jamaica, Saint Vincent and the Grenadines, Grenada and Barbados to provide emergency services. As new information emerged, WFP adjusted its response to provide food and cash assistance where it was most needed and distributed 5,000 food kits, enough to feed 15,000 people for 10 days, in affected areas of Grenada and St. Vincent and the Grenadines.

This September, WFP launched a cash assistance program in Jamaica to extend support to 11,500 people. WFP continues to assist people affected by Hurricane Beryl and help communities prepare for future extreme weather events.

*Photo: WFP/Rheanna Chen*



PHILIP

In Grenada, WFP provided cash assistance to residents of Petite Martinique after Hurricane Beryl.

## TROPICAL STORM ALBERTO HITS EL SALVADOR

In June, Tropical Storm Alberto hit Central America and flooded many parts of El Salvador. The rains, floods and landslides killed 19 people, affected 176,000 people and destroyed infrastructure throughout the country.

In the wake of the storm, WFP provided food and cash assistance to 1,400 Salvadoran families who had fled their homes and taken refuge in temporary shelters.

*Photo: WFP/Versative/Diego Santamaria*



MARIA ALICIA

Maria Alicia's community experienced heavy rains, which flooded their homes and destroyed their crops.

## CYCLONE REMAL & FLOODS IN BANGLADESH

Cyclone Remal was the most devastating storm to hit Bangladesh in over a decade, bringing widespread flooding and damaging homes, crops and infrastructure when it made landfall in late May.

Based on storm forecasting, WFP provided anticipatory cash assistance to 30,000 families ahead of the storm, which allowed them to purchase food or pay for transportation to safer areas. In the aftermath, WFP supported affected communities with recovery and rebuilding efforts.

*Photo: WFP/Mehedi Rahman*



•••  
**SOUROVI**

Prior to the cyclone, Sourovi received cash assistance from WFP. This cash was a lifeline for her and her daughter when the storm destroyed their home and forced them to move.

## DROUGHT IN SOUTHERN AFRICA

Southern Africa faces a devastating El Niño-induced drought that is decimating crops and livelihoods. Shifted rain patterns, long dry spells during the planting season and insufficient rain have destroyed crop cultivation in large parts of the region. 27 million people have been pushed into hunger as a result.

Five countries – Lesotho, Malawi, Namibia, Zambia and Zimbabwe – have declared a state of drought disaster. At least 3 million tons of corn are required immediately to meet regional food needs. **This is the second highest deficit of corn in 15 years.**

WFP is scaling up emergency food and nutrition assistance to 5.9 million people in seven of the hardest-hit countries until March 2025, although funding shortfalls may impact WFP's ability to respond to this disaster at scale.

*Photo: WFP/Victor Moyo*



•••  
**NELTA**

In Zimbabwe, Nelta is a mother of five and a small-scale farmer. She received support from WFP after her land was affected by the El Niño-induced drought.

# WORLD HUMANITARIAN DAY SPOTLIGHT

Every day, dedicated WFP staff work tirelessly to support communities affected by crises around the globe. On August 19, World Food Program USA commemorated World Humanitarian Day, a day set aside to honor humanitarian workers who have been killed or injured in the line of duty.

This year's theme, #ActForHumanity, highlighted the alarming rise in attacks against humanitarian workers and civilians, while advocating for the enforcement of international humanitarian law to address these grave violations. This year has been one of the deadliest years on record for humanitarian workers, hindering their ability to deliver vital assistance.

In Yemen, 17 million people face acute hunger because of the ongoing conflict and deep economic crisis.

Staff members like Hani Naji, a WFP shipping assistant for port operations, play a key role in delivering food assistance. Knowing that his work directly alleviates hunger provides Hani with a profound sense of purpose. "Your trust and generosity enable us to reach those in the most remote and difficult-to-access areas, delivering not just food but also hope and the possibility of a better future. Thank you for standing with us in this vital mission."

"Every contribution, no matter how small, makes a tangible difference in the lives of those who are struggling to survive."

Despite facing numerous life-threatening situations during Yemen's conflict, including near-death experiences while delivering fuel amid aerial bombardments, Hani remains committed to our joint mission to end hunger. **"My biggest motivation is humanity," he shared.**

*Photo: WFP/Alaa Noman*



**HANI NAJI**

WFP SHIPPING ASSISTANT FOR  
PORT OPERATIONS IN YEMEN



## CELEBRATING 20 YEARS OF UNHAS

The United Nations Humanitarian Air Service (UNHAS), operated by WFP, has provided safe, reliable and cost-efficient passenger and light cargo transport for the humanitarian community for 20 years.

UNHAS is a part of WFP's long-standing history of aviation, responding to crises in the world's most remote and challenging locations that cannot be safely reached by land or commercial flights.

ON AVERAGE, UNHAS  
TRANSPORTS OVER  
**33,000 PASSENGERS**  
and over **727,000**  
pounds of light cargo  
per month to **310**  
regular destinations.

*Caption: In Nigeria, WFP staff retrieve boxes of food aid from the UNHAS helicopter in Maiduguri, Borno State.  
Photo: WFP/Ozavogu Abdul*

## THANK YOU

World Food Program USA thanks you for your dedication to ending hunger. Your generosity and commitment make a difference for millions of people.

Photo:WFP/Mehedi Rahman



## Continue to Engage with World Food Program USA:

1

### GIVE

Visit our website to learn how you can support our work and send food today.

2

### FOLLOW

Join us on social media for the latest updates on hunger and WFP's response.

*@wfpusa*

3

### SUBSCRIBE

Sign up to get email updates on the latest news and stories in the fight against hunger.

4

### PROVIDE

Long-term food security with a gift through your will, trust or retirement plan. For more information, please contact Karen Metzger at [kmetzger@wfpusa.org](mailto:kmetzger@wfpusa.org) or (206) 813-5236.

5

### ADVOCATE

Sign petitions and send emails to your representatives in Congress to help end world hunger.



World Food Program USA

**World Food Program USA**  
1750 H St NW, #500  
Washington, DC 20006